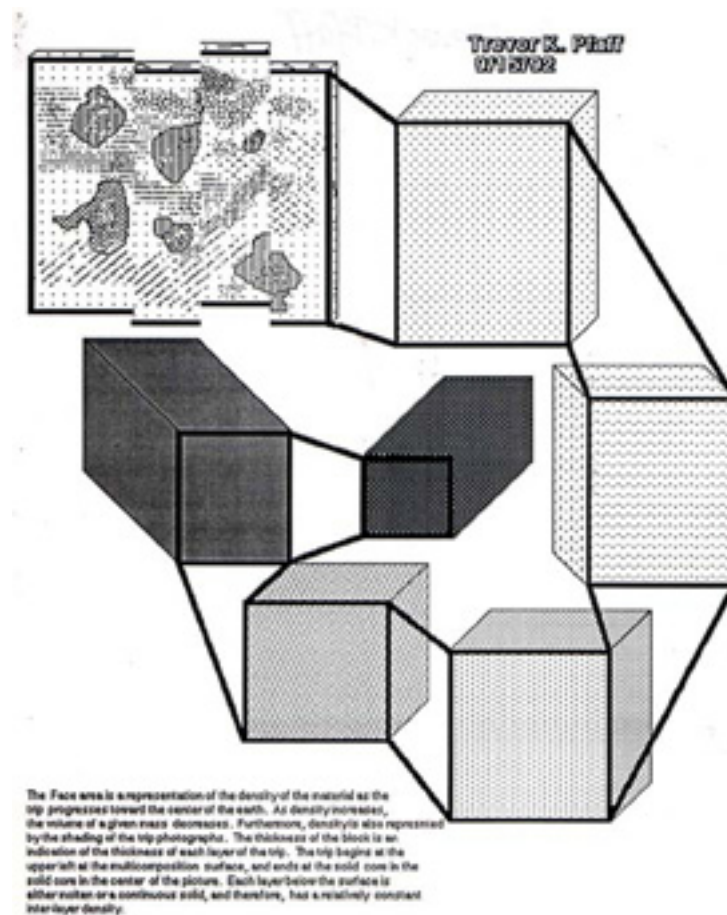


A TRIP TO THE CENTER OF THE EARTH- Dr. Anna Ursyn, UNC, Greeley, Colorado

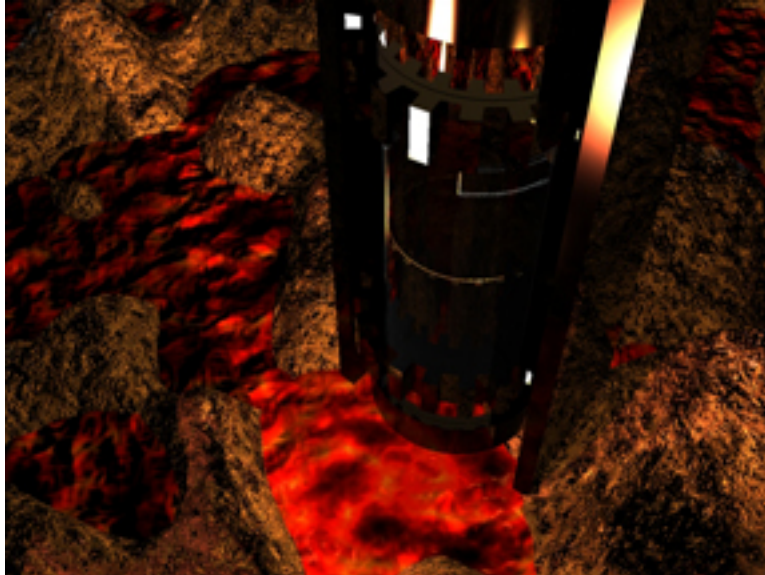
This project involves creating a graphic which visualizes the Earth structure. First, the students researched the physical geology, the Earth's structural features and dynamical processes. Those served as a background to a nature-inspired work.

They made sketches as their own visual notes from this imaginative trip (just as snapshots). They could resemble the 5"x 7" flash cards or photographs, many of them gathered on one page, or each of them could fill the entire page. Sketches could be made on a screen or on paper, with charcoal, chalk, crayons, pastels, watercolor, or tempera paints. The image below shows student's interpretation of such a trip created on the computer. Knowledge about Earth makeup may act as a stimulus to evoke student's visual response in the form of art graphics. This work involved analyzing different types of Earth materials (such as rocks, soil, and minerals), recognizing that fossils are evidence of past life, learning about major features of the Earth's crust and core and about natural forces and processes that change the Earth's makeup (such as heat and pressure).



Trevor K. Pfaff is created this work as concept visualization. The face area is a representation of the

density of the material as the trip progresses toward the center of the earth. The shading represents density. The thickness of the block indicates the thickness of each layer. The trip begins at the upper left at the multi- composition surface, and ends at the solid core in the center of the picture. The author embedded a description into the drawing as a part of its background composition and as the process explanation at the same time.



Nathan White: An elevator descending to the Earth core.



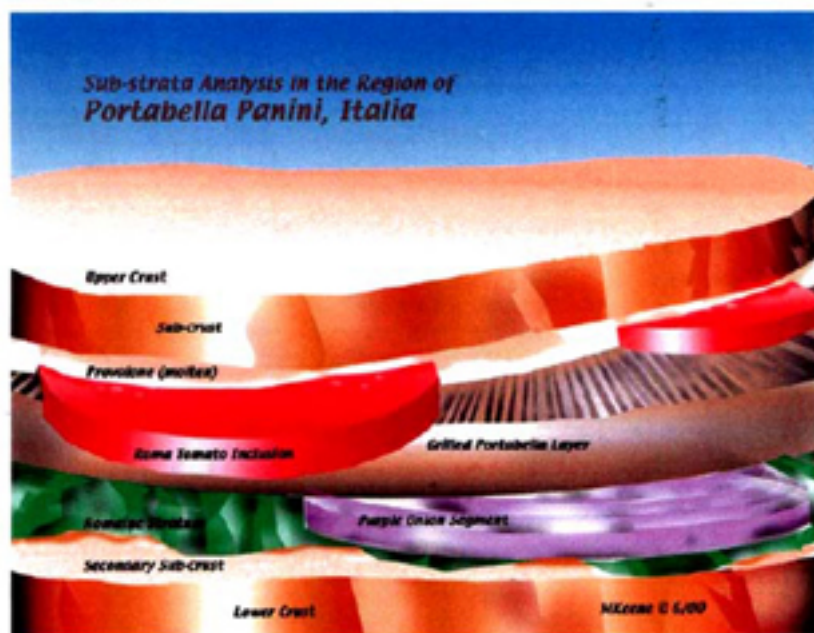
Peter Mussett wanted to show the forces below the tectonics, factors that make the planet's interior so hot and cause heat waves, and what makes continent unite or part.

Hi all,

Here is a graphic model of the sub-strata of a little known region of northern Italy. It's off the beaten path of tourists, but cherished by the natives for its quiet beauty and delightful local cuisine. I long for a time when I can visit its craggy hills and sheepish plains.

Miss later,
Mike Keene

Content-Type: image/jpeg; x-mac-type="4A504547"; x-mac-creator="38424940";
name="MKKeene7.jpg"
Content-Description: Unknown Document
Content-Disposition: inline;
Filename="MKKeene7.jpg"



MKeene7.jpg

Michael Keene created a project where graphic activities were integrated with physical geology-related concepts, events and processes, language arts, and connotations pertaining to the Italian sandwich from the imaginative region in Italy: Portabella, Panini.